

Interface specification  
**Public location query**  
Scheme participant search



Document versions					
Name	Version	Developer	Author	Version description	Date
Messages from the central QS control database	1.0.0	VBO-Services GmbH	Oliver Bandke	Description of location query messages	01/01/2017
	1.0.0			Updates to "description" information 6.1.3	15/11/2018
	1.0.0			Additions to 6.1.3 "Unoccupied" description	18/01/2022
	1.1.0			Additions to 6.1.3 "Free ragne" descriptions	08/11/2022
	1.1.1			Additions to 6.1.3 "GGN; products" descriptions	23/03/2023
	1.1.1			Additions to 6.1.3 "QM-MILCH" ++/HF3	15/05/ and 24/05/2023
	1.1.1			Additions to 6.1.3 "Nr."	01/08/2023
	1.1.1			Update to 6.1.3 "FIAS description"	22/04/2024
	1.1.1			Additions to cultures	01/06/2024
	1.1.1			German Federal law: TierHaltKennzG (THKG) Display of the number(s)	01/08/2024
	1.1.1			HKZ-D Display when authorised (herkunft-deutschland.de)	01/08/2024 (rev01)
	1.1.1			Clarification of separation milk and meat in slaughter cows; addition +++ QMmilk	01/08/2024 (rev02)
	1.1.1			Further production scopes pet food	01/01/2025
	1.1.1			Identity of pigs in ITW	01/04/2025

If you have any questions regarding the implementation or would like to be added to our mailing list for current information on the interface, please contact [Dr. Ragnhild Weber-Jonkheer](#) directly.

## Contents

<b>1 Document status .....</b>	<b>3</b>
<b>2 Target audience.....</b>	<b>3</b>
<b>3 Terminology .....</b>	<b>4</b>
<b>4 Message transmission .....</b>	<b>8</b>
4.1 Technical aspects .....	8
4.2 Automatic programme code generation.....	8
4.3 Testing SOAP messages.....	8
<b>5 Encryption .....</b>	<b>9</b>
5.1 General information on encryption .....	9
<b>6 Messages.....</b>	<b>9</b>
6.1 Advanced information about QS and AWI participation .....	9
6.1.1 selectQSTW(QSExtLocationStandardQuery)- Advanced production scope and location data query.....	9
6.1.2 QSExtLocationQSTWReply - the response data.....	9
6.1.3 QSExtLocationQSTWReply - additional description .....	10
<b>7 Literature .....</b>	<b>15</b>

\*AWI = Animal welfare initiative

## 1 Document status

Release

## 2 Target audience

This document is aimed at those who wish to implement/establish the interfaces detailed here for querying location statuses using software. As such, the document does not contain a systematic introduction to encryption technology, web services, XML or SOAP. It assumes the reader already possesses this knowledge or is willing to acquire the appropriate literature as required. Examples of useful books on this topic are: [1], [2], [3]. Furthermore, you will find a wealth of useful content on the fundamentals of these areas on the internet (e.g. on [7], [6] and [5]).

It is also not feasible for the document to provide comprehensive information on the QS scheme itself and how it works. We therefore recommend that each coordinator cooperates with its IT service provider and visits the QS website.

### 3 Terminology

Some terms that are necessary to understand the QS scheme and interfaces are defined in more detail below.

**Location:** Within the QS scheme, a location is a logical entity rather than a geographical one and refers to a logical production unit. Locations are the subject of QS inspections. Consequently, checklists always relate to locations. A location is defined as an identification number combined with a QS production scope (see 'Production Scope' chapter, Table 2).

**QS production scopes:** A production scope relates to a location and characterises the economic system pursued there. The production scope is represented by the CS840018Type data type. The defined production scopes are listed in Table 2. As of 23/06/2003, production scopes from farm locations can be combined and represented accordingly. This is produced by adding the last three figures of a production scope number bit by bit. For example, 1001 and 1002 become 1003. This has a knock-on effect on location reporting. If the database already contains a location with the production scope 1012 and a location extension is to be reported using 1004, it triggers an error message because 1004 is already part of 1012 (= 1008 + 1004).

QS production scopes (CS840018Type)

#### SUPPLY CHAIN MEAT AND MEAT PRODUCTS

##### Feed sector

- 70      premix production
- 700    additive production
- 71      compound feed production
- 72      feed material production
- 73      small scale feed material production
- 74      private labelling
- 75      mobile feed milling and mixing plant
- 76      feed trade
- 77      storage and transshipment (feed)
- 78      road transport (feed)
- 79      rail, inland waterway and ocean ship transport (feed)
- 770    matrix coordinator

##### Agriculture

- 20      agricultural coordinator
- 904    livestock transport

##### Production branch cattle farming

- 1001   cattle production
- 1002   calf production
- 1004   calf breeding
- 1008   dairy farming

1016 suckling cow production

1320 cows (QM milk)

**Production branch pig farming**

2001 pig production

2002 gilt and boar rearing

2004 sow and piglets production

2008 piglet rearing

**Production branch poultry farming**

3001 broiler production

3002 turkey rearing

3004 turkey production

3008 peking duck rearing

3016 peking duck production

301 broiler breeder farming

304 turkey breeder farming

**Agriculture hatchery**

50 hatchery broiler chicks

51 hatchery turkey chicks

52 transport chicks own vehicles

53 transport chicks 1:1 contracted carriers

**Production branch crop farming, grassland use, forage production**

7001 cereal production

7002 oilseed production

7004 legume production

7008 sugar beet production

7016 corn production

7032 potato production (without food potatoes)

7064 grassland use and forage production

**Slaughtering/deboning**

30 slaughtering/deboning beef, veal, pork

31 slaughtering beef, veal, pork

32 deboning beef, veal, pork

33 slaughtering/deboning poultry

34 slaughtering poultry

35 deboning poultry

36 livestock transport cattle/pigs own vehicles

- 37 livestock transport poultry own vehicles
- 38 livestock transport cattle/pigs 1:1 contracted carriers
- 39 livestock transport poultry 1:1. contracted carriers
- 88 own logistic meat and meat products

#### **Processing**

- 41 cutting
- 42 processing
- 43 processing/cutting
- 88 own logistic meat and meat products

#### **Butchery**

- 90 coordinator butchery
- 91 butchery: production without point of sale
- 92 butchery: production with direct point of sale
- 93 butchery: direct point of sale

#### **Meat wholesale**

- 80 meat wholesale
- 880 broker (meat and meat products)
- 87 logistic meat and meat products

#### **Petfood**

- 501 Transport (raw material petfood)
- 505 Storage (raw material petfood)
- 510 Processing plant (raw material petfood)
- 515 Petfood plant
- 520 Wholesale (petfood)
- 525 Private labelling (petfood)
- 530 Broker (petfood)
- 540 Central retail companies (pet food coordinators) (B2C)
- 541 Pet food retail market/branch (bundled locations) (B2C)
- 542 Independent pet food retail market/branch (unbundled locations) (B2C)
- 549 Online trade pet food (B2C)

#### **System gastronomy/Communal catering (SG)**

- 600 System gastronomy/Communal catering coordinator (as head office)
- 601 Restaurant/Operating site
- 602 SG single company

**Food retail**

- 60 food retail coordinator
- 61 central warehouse (meat and meat products)
- 6001 food retail (meat and meat products)
- 6003 food retail (meat and meat products, fruit, vegetables, potatoes)

**SUPPLY CHAIN FRUIT, VEGETABLES, POTATOES****Production**

- 20 agricultural coordinator

**Production branch fruit and vegetable production**

- 4001 fruit production (outdoor)
- 4002 fruit production (covered)
- 4004 vegetable production (outdoor)
- 4008 vegetable production (covered)

Production branch potato production

- 5001 potato production

**Preparation/Processing**

- 450 preparation/processing

**Outsourced marketing**

- 460 separated marketing

**Wholesale fruit,vegetables, potatoes**

- 81 wholesale fruit, vegetables, potatoes (first-line merchant)
- 82 wholesale fruit, vegetables, potatoes (trading partner)
- 84 logistics fruits, vegetables, potatoes
- 86 food retail warehouse meat and fruit, vegetables, potatoes
- 840 (coordinator logistics fruits, vegetables, potatoes)
- 801 agencies fruit, vegetables, potatoes (first-line merchant)
- 802 agencies fruit, vegetables, potatoes (trading partner)

**Preparation/Processing**

- 85 preparation/processing

**Food retail**

- 60 food retail coordinator
- 6002 food retail (fruit, vegetables, potatoes)
- 6003 food retail (meat and meat products, fruit, vegetables, potatoes)



## 4 Message transmission

The data is exchanged synchronously. The data is transmitted in an encrypted format using client and server-side certificates. The address of the web service is <https://www.qs-plattform.de/axis/services/rpcrouter>.

### 4.1 Technical aspects

SOAP is an XML application for data communication. SOAP is used for both *Remote Procedure Calls* (RPC) in the context of *distributed computing*, and asynchronous message exchanges. A SOAP message consists of an *envelope* comprising a *header* and a *body*. The *header* contains various pieces of processing information and the *body* contains the actual message, which essentially represents an XML document.

### 4.2 Automatic programme code generation

Various tools are freely accessible online that enable programme codes to be generated for SOAP clients out of WSDL documents, which can then be used to communicate with the defined interfaces.

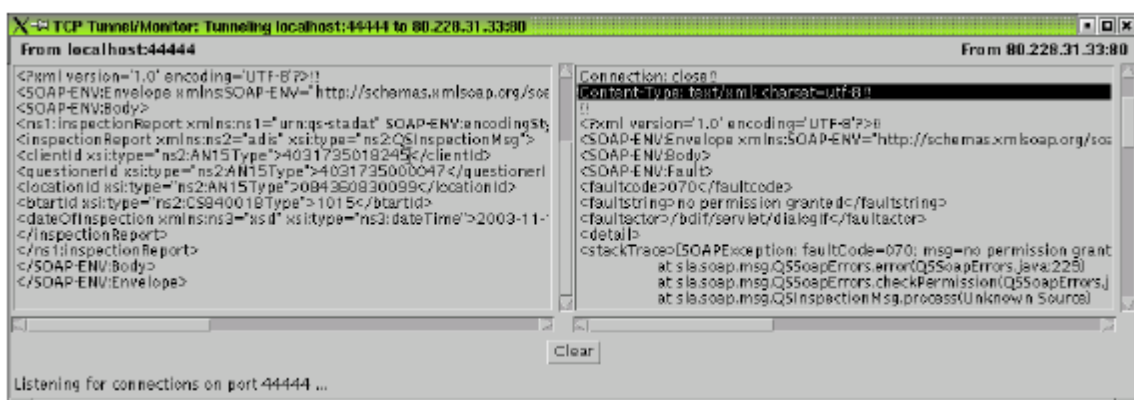
### 4.3 Testing SOAP messages

Once the clients have been finalised, difficulties tend to arise in understanding the communication behaviour of the client and server. This is where a tool from the AXIS project comes in, which enables the queries from the client and answers from the server to be visualised by “tunnelling” the query. The tunnel is initiated with three parameters: local port, external computer, external port. Initiating a tunnel on a local computer of the QS database server may resemble the following:

```
java org.apache.axis.utils.tcpmon 44444 193.28.96.81 80
```

For this, the client query is not sent directly to the server but to a proxy, which transfers the query to the server. A similar tunnel is illustrated in Figure 1.

Figure 1: Illustration of a SOAP message





## 5 Encryption

### 5.1 General information on encryption

The HTTPS protocol must be used in order to access the entire functionality of the coordinator interface. (This solution is completely independent from the technical implementation of the web service and is based on a standardised, technical implementation of the Apache web server-based encryption. Any problems in this regard are very difficult for us to solve on our side and are likely caused by the configuration and settings of the relevant client that enable it to communicate via an HTTPS tunnel.)

## 6 Messages

### 6.1 Advanced information about QS and AWI participation

**Precondition:** Somebody asks whether QS or the AWI have a valid approval in place for a location with regard to a particular species (pigs, cattle, poultry). The species and the location ID for the queried location are known.

**Postcondition:** The status and production scope of the location are known. If an error occurs, a corresponding alert is generated and returned.

#### 6.1.1 selectQSTW(QSExtLocationStandardQuery)- Advanced production scope and location data query

```
<complexType name="QSExtLocationStandardQuery">
  <sequence>
    <element name="locationId" nillable="true" type="xsd:string"/>
    <element name="btartId" nillable="true" type="xsd:int"/>
  </sequence>
</complexType>
```

The XML elements have the following semantics:

**locationId:** The location number of the location.

**btartId:** The production scope key of the location for the maximum possible combination for a species according to the key table (1031,2015,3031,4015,5015,7063).

#### 6.1.2 QSExtLocationQSTWReply - the response data

The response message contains the production scopes for which the location possesses approval. For each production scope, the message indicates whether there is a valid scheme agreement in place for the location (1 = yes, 0 = no). A '2' is returned for inactive locations (suspended due to missing salmonella samples). A '3' is returned for locations that are suspended due to other reasons. The approval status of the production scope is also returned in plain text: 'yes' for approved locations, 'no' for unapproved locations, 'inactive' for inactive locations (suspended due to missing salmonella samples) and 'locked' for suspended locations.

```
<complexType name="QSExtLocationQSTWReply">
```

```

<sequence>
  <element name="certifications" maxOccurs="unbounded" minOccurs="0"
    type="tns3:QSLocationQSTWType"/>
</sequence>
</complexType>
<complexType name="QSLocationQSTWType">
  <sequence>
    <element name="bstartId" nillable="false" type="xsd:int"/>
    <element name="qsCertification" type="xsd:int"/>
    <element name="description" nillable="true" type="xsd:string"/>
    <element name="twCertification" type="xsd:boolean"/>
  </sequence>
</complexType>

```

The XML elements have the following semantics:

**bstartId:** The production scope key of the location.

**qsCertification:** Key value that indicates whether a valid scheme agreement exists for the location. Key: 0 = no, 1 = yes, 2 = inactive, 3 = locked

**description:** Description of the key value.

**twCertification:** Does an AWI certification exist: true/false

### 6.1.3 QSExtLocationQSTWReply - additional description

This message returns the corresponding result to all basic scopes contained in the transmitted production scope. Accordingly, for example, both 1004 and 1001 are checked when 1005 is transmitted as a bstartID, while for 1015 each basic scope is contained up to 8.

The "description" parameter in the response can contain additional information:

- FIAS, for a passed FIAS audit
- FB, if it is a family business
- REGIO, for a passed "Regionalfenster" audit
- INACTIVE, excluded from supplying pigs as part of the QS scheme until sampling has been carried out and the sample results are available in the salmonella database
- PREFAT, pig fattening – only pre-fattening, suspended for QS fattened pigs for slaughter
- UNOCCUPIED, poultry farms that do not have any housed birds = unoccupied, no eligibility of delivery in the QS scheme
- FREI, free range husbandry
- GGN, GlobalG.A.P. number
- PRODUCTS, fruit, vegetable, potato products
- NR, location number when searching with QS-id.
- QM-MILCH, certification scheme; with ++/HF3, +++/HF4 if applicable

- THKG identification number(s) for husbandry facilities in accordance with TierHaltKennzG |- separated within location number (VVVO no.)
- HKZ-D: authorised participation in Herkunftskennzeichen Deutschland of ZKHL (herkunft-deutschland.de)
- MILK, for locations that are eligible to deliver for milk, only (within QM-Milch standard), but not for slaughter cows
- *as of April 1st, 2025 ITW: IDENTITY:FATTENING (namely from fattening) or IDENTITY:BIRTH (namely from birth) A farm is only "namely from birth" and entitled to receive the higher price if it exclusively purchases ITW piglets.*

- Products
- 250214 wheat seedlings
- 999998 Producers with not self-produced goods
- 140020 sweet cherry
- 401020 peanuts
- 270990 other stem vegetables (fresh)
- 270060 leek
- 256070/1 marjoram
- 252020/1 Glassworts
- 220040 spring onion
- 256070 thyme
- 256100 tarragon
- 110990 others citrus fruit
- 154010/1 cowberry
- 130040 medlar
- 220010/1 garlic (fresh)
- 256030/4 lovage
- 231010 tomato
- 161020 fig
- 252990 other spinach and similar leaves
- 130030 quince
- 213020/1 carrot (bulk goods)
- 213040/1 ginger
- 110040 lime
- 120110 walnut
- 251010 lamb's lettuce (outdoor)
- 154990 others small fruit and berries
- 213080/2 small radish (outdoor)
- 130010 apple
- 130020/1 nashi pear
- 234001 Corn (popcorn corn)
- 300020 lentil (dried)
- 162020 lychee
- 233030 watermelon
- 251010/1 lamb's lettuce (greenhouse)
- 130990 others pome fruits
- 213080/3 small radish (greenhouse)
- 140010 apricot
- 231040 okra
- 256990/3 ramson/ wild garlic/ bear's garlic

- 120070 macadamia
- 253000 vine leaf
- 270040 fennel
- 140990 other stone fruits
- 213080 radish (outdoor)
- 270050 artichoke
- 256070/2 oregano
- 256990/3
- 110050 mandarins (clementine, tangerine and other hybrids)
- 231020 capsicum
- 153990 other cane fruits
- 231030 aubergine
- 120090 pine nuts
- 232030/002 Calabash (e.g. Calabash)
- 120010 almond
- 242020/2 savoy cabbage
- 163050 pomegranate
- 212990 other tropical root and tuber vegetables
- 163010 avocado
- 252020 purslane (winter purslane (miner's lettuce), glasswort)
- 232030/008 Squashes (e.g. Spaghetti squash, Halloween squash, Pattypan squash)
- 233020/001 Musky gourd (e.g. Butternut)
- 252030 chard
- 110030 lemon
- 110010 grapefruit (shaddocks, pomelos, sweeties, tangelo, ugli and other hybrids)
- 220990 other bulb vegetables
- 270080 bamboo shoots
- 251020/8 lettuce (romaine; outdoor)
- 233020/003 Pumpkin (giant) (e.g. Hokkaido)
- 163080 pineapple
- 232030 courgette
- 243020 kale
- 242020/4 pointed cabbage
- 163020 banana
- 256030/2 celery leaves; sorrel
- 233020/1 Pumpkin (others)
- 163080 Ananas
- 234000 Corn (sweet corn)
- 232020 gherkin
- 242020/3 white cabbage
- 256080 basil
- 251080/9 other sprouts and shoots
- 163030 mango
- 220020 onion
- 232010 cucumber
- 999999 preparation
- 130020 pear
- 252010/1 turnip greens
- 162030 maracuja; passionfruit (granadilla)
- 154080 elderberries (wild rowan berry)
- 120060 hazelnut

- 0251000/1 coloured lettuce (lollo, leaf-oak, batavia) (outdoor)
- 270030 celery
- 212020 sweet potato
- 154060 mulberry
- 120040 chestnut
- 154010 cultivated blueberry
- 0631000 edible flowers
- 241020 cauliflower (romanesco)
- 213110 white turnip; turnip; swedes
- 213040 horseradish
- 251080/1 mizuna (leaves and sprouts of brassica spp)
- 153030 raspberry
- 0280020 wild fungi (morels, chanterelle)
- 260010 beans (with pods)
- 212030 yams
- 256990/2 balm / lemon balm
- 300010 beans (dried)
- 154030 currant (red, black, white)
- 0251000 coloured lettuce (lollo, leaf-oak, batavia) (greenhouse)
- 260020 beans (without pods)
- 220020/1 onions (silverskin onions)
- 232990 other curcubits - edible peel
- 233010 melon (muskmelon, kiwano)
- 163090 bread fruit; jackfruit
- 154010/2 josta berry
- 022030 shallots
- 256990/1 savory
- 241010 broccoli
- 243990 other leafy brassica
- 256080/1 mint
- 163060 cherimoya; rambutan
- 161050 carambola
- 251080 baby leaf
- 153010 blackberry
- 241990 other cauliflower
- 213020 carrot (bunch)
- 154020 craneberry
- 211000 potato
- 231010/1 physalis/cape gooseberry
- 254000 water cress (water convolvulus, water clovers, water mimosas)
- 256990 other fresh herbs
- 140030 nectarine
- 163100 durian
- 256010 chervil
- 151010/1 green table grape
- 213080/1 radish (greenhouse)
- 120030 cashew nut
- 163990 other large fruits - inedible peel
- 161030 olive
- 300030 peas (dried)
- 162010 kiwi

- 151010/2 blue table grape
- 270070 rhubarb
- 255000 chicory
- 300990 other legumes, dried
- 110020 orange
- 213050 topinambur
- 220010 garlic
- 270010/1 white asparagus
- 242010 Brussels sprouts
- 231020/1 chili peppers
- 260990 other legumes - fresh
- 163040 papaya; tamarillo
- 163070 guava
- 213030 celeriac
- 256060 rosemary
- 243010 chinese cabbage (indian (chinese) mustard, pak choi)
- 162990 other small fruits - inedible peel
- 120020 brazil nut
- 154050 rose hip
- 244000 kohlrabi (outdoor)
- 213010 beetroot
- 161010 date
- 242990 other head cabbages
- 213060 parsnip
- 130050 loquats / japanese medlars
- 244000/1 kohlrabi (greenhouse)
- 242020 red cabbage
- 256030/1 dill
- 251990 other lettuces, other salad varieties incl. brassicaceae
- 120080 pecans
- 161060 kaki; japanese persimmons
- 120050 coconut
- 251060 roman rocket / rucola
- 251020/2 iceberg lettuce (outdoor)
- 280990 other cultivated fungi
- 256040 parsley
- 162040 prickly pear; cactus fruit; pitaya
- 251020 head lettuce (outdoor)
- 256050 sage
- 251020/3 iceberg lettuce (greenhouse)
- 233990 other cucurbits - inedible peel
- 256040/1 parsley (pot)
- 212010 cassava (dasheen, eddoe (japanese taro), tannia, manioc)
- 270010/2 green asparagus
- 251020/1 head lettuce (greenhouse)
- 140020/1 sour cherry
- 260030 peas (with pods)
- 120990 other nuts (shelled/unshelled)
- 213070 parsley root
- 251030 escarole (radicchio, endivie, ...)
- 151010/3 kiwi berry

- 256030/3 coriander
- 256020 chive
- 213090 black salsify
- 260040 peas (without pods)
- 231990 other solanaceae
- 140030/1 peach
- 256030/5 caraway leaves
- 251040 garden cress
- 252010 spinach
- 152000 strawberry (outdoor)
- 161990 other miscellaneous fruits - edible peel
- 140040 plum (reineclaude, mirabelle)
- 153020 dewberry (loganberry)
- 280010 cultivated fungi (common mushroom, oyster mushroom, shi-take)
- 154040 gooseberry
- 152000/1 strawberry (greenhouse)
- 213990 other root and tuber vegetables except sugar beet
- 120100 pistachio
- 256090 bay leaves
- 500020 Pseudocereals (Amaranth, Buckwheat, Chia seeds, Quinoa)
- 161040 kumquat
- 0233000 oil pumpkin
- 233020 pumpkin
- 251041 microgreens

## 7 Literature

- [1] Harold, Means: XML in a Nutshell, (O'Reilly), 2001.
- [2] Seely: SOAP: Cross Platform Web Service Development using XML (Prentice Hall), 2002.
- [3] Snell usw.: Programming Web Services with SOAP (O'Reilly), 2002.
- [4] <http://www.gnupp.de>.
- [5] <http://www.apache.org>.
- [6] <http://www.xml.org>.
- [7] <http://www.w3.org>.
- [8] <http://www.gnupg.org>.
- [9] <http://www.w3.org/TR/SOAP-dsig>.





## **QS Qualität und Sicherheit GmbH**

Managing Director  
Dr. Alexander Hinrichs

Schwertberger Straße 14  
53177 Bonn, Germany

Tel +49 228 35068-0  
Fax +49 228 35068-10

[info@q-s.de](mailto:info@q-s.de)  
[www.q-s.de/en/](http://www.q-s.de/en/)

Image: QS